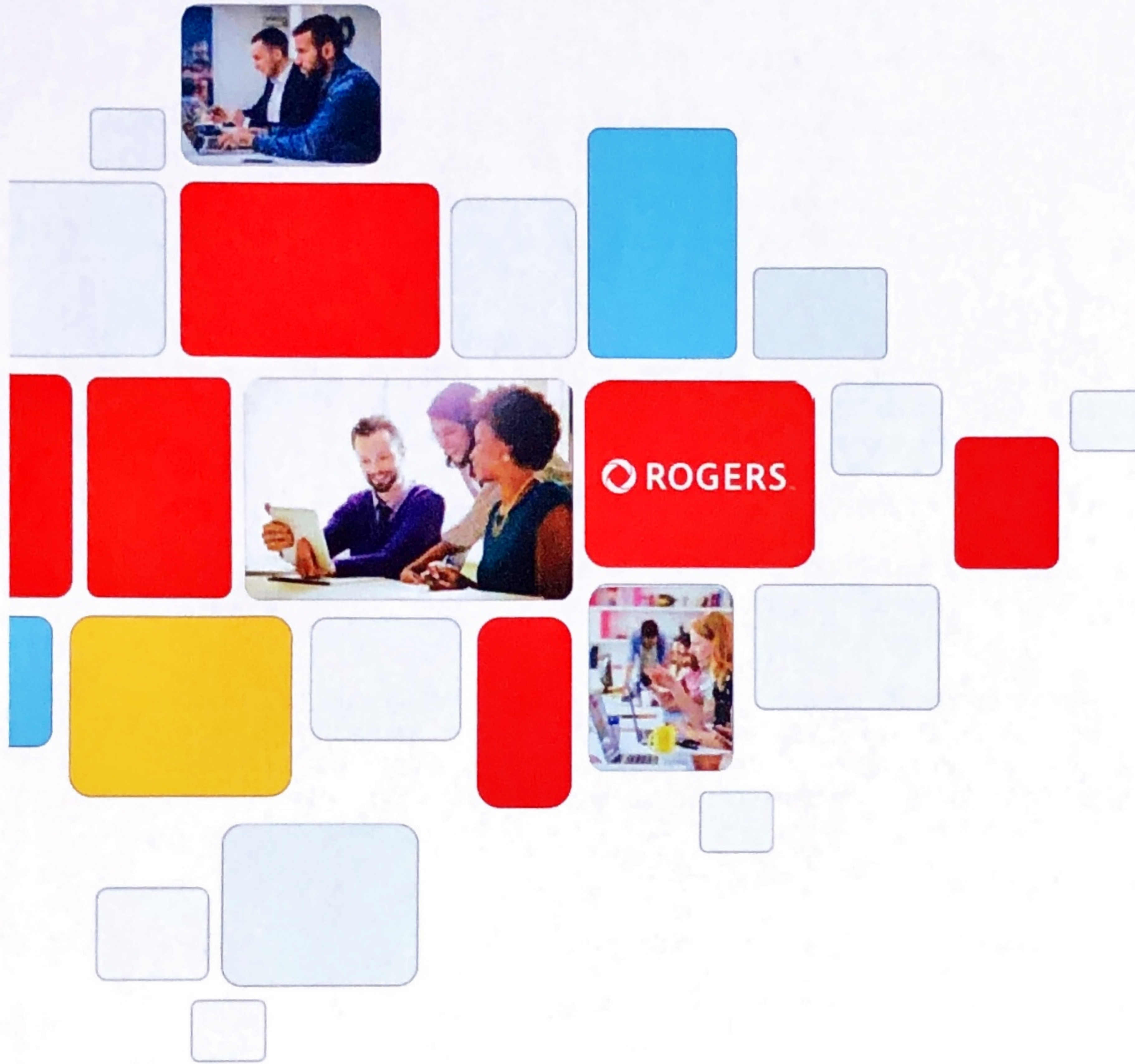


Date: August 28, 2019



Public Notification Package for  
Proposed Wireless Communications Installation  
Plan 2266JK, Block 1, Ptn. SE 35-25-3 W5M  
Rocky View County, Alberta  
Rogers Site Name: W5618 Township Road 255

Rogers Communications Inc. | 500 – 4th Avenue SW, Suite 700 | Calgary, AB T2P 2V6



## 1. Introduction

Rogers Communications Inc. (Rogers) is proposing to construct a new self-support wireless communications installation at Plan 2266JK, Block 1 (Ptn SE 35-25-3 W5M) (the "**Proposed Installation**") in order to fill significant wireless coverage gaps in the area and meet the rising demand for wireless voice and data services.

This notification package sets out the pertinent details about the Proposed Installation and invites the public to submit their written questions and comments about the Proposed Installation.

## 2. Purpose of Proposed Installation and Site Selection

Due to subscriber demand for improved wireless service, Rogers produced a search ring for an appropriate telecommunications site in Rocky View County, in the province of Alberta. As a result, Rogers is proposing a site as indicated on the map below. Rogers Radio Engineering Department selected this site as an appropriate location so as to maximize coverage for wireless users in the area.

Designing a wireless network is similar to assembling a 3D jigsaw puzzle. Cell towers and antenna installations must be located near one another so that they are able to provide contiguous service without any holes or gaps in coverage. They must also be set at elevations that are high enough to deliver the signals to a wide service area.

Following a survey of the area, Rogers identified the Proposed Installation - currently classified as R-2 (Residential Two) - as the most viable candidate to meet their network coverage requirements. It will provide connectivity for an area that is currently experiencing below-average service levels and cannot be served by existing antenna sites as they are too distant and overloaded.

The location for the Proposed Installation offers technical and operational advantages, including proximity to roads for viable access for construction and maintenance, power connections, etc., thus reducing the need for further impact on the area. The Proposed Installation will not result in any interference or impact to the current use of the property or surrounding lands.

## 3. Location of Proposed Installation

The location of the Proposed Installation is described below:

|                         |                                            |                   |
|-------------------------|--------------------------------------------|-------------------|
| Municipal address:      | 31030 Twp Rd 255, Rocky View County, AB    |                   |
| Legal description:      | Plan 2266JK; Block 1 (Ptn SE 35-25 -3 W5M) |                   |
| Geographic coordinates: | Lat: 51.169528                             | Long: -114.307129 |
| Land usage:             | Acreage                                    |                   |





The Proposed Installation is shown on the drawings below. In addition, a copy of the Site Plan is provided in Appendix 1 to this notification package.

**Map showing the Proposed Installation**



**Aerial photograph showing the Proposed Installation**





4.

#### 4. Description of Proposed Antenna System

##### (a) Structure

The underlying structure for the Proposed Installation is a 45m tall self-support tower with external antennas. The photo rendering included in Appendix 1 illustrates an example of what the Proposed Installation will look like.

Rogers has made every effort to decrease the size and visibility of the Proposed Installation. The height requirement for any installation is based in maintaining a "line of sight" signal with our users and other surrounding towers.

##### (b) Antenna system

The antenna system will initially include 6 antennas at 44m with provisions for future technology services. Future space is allocated for additional technical requirements as they are needed.

Beneath the currently proposed antenna equipment, the area could be taken into consideration for future equipment use either by Rogers or for co-location purposes should a request for co-location be made by another carrier/proponent.

##### (c) Compound

The approximate 225 m<sup>2</sup> leased area (15m x 15m) will be located on Plan 2266JK, Block 1, Ptn. SE 35-25-3 W5M, and accessed through an existing approach off Hwy 1A. It will be situated on property designated as R – 2 (Residential Two). The compound will contain locked, electronically monitored equipment cabinets, backup battery power, maintenance tools, manuals and a first aid kit. It will be completely fenced on lease, and have a locking gate. There will be no areas accessible by the public.

Rogers makes every attempt, when possible to blend the facility into the surroundings, such as locating near large trees, existing power lines and providing landscaping/fencing to improve aesthetics.

#### 5. Innovation, Science and Economic Development Canada Authority and Requirements

##### (a) Rogers is regulated by Innovation, Science and Economic Development Canada

As a federal undertaking, Rogers is regulated by Innovation, Science and Economic Development Canada ( "ISED" ) under the *Radiocommunication Act*. While Rocky View County has a significant role to play in the approval of a tower or antenna installation, provincial and municipal land use legislation is superseded by federal legislation and the ultimate decision to approve a tower or antenna systems lies with ISED.

Because wireless services are federally regulated, municipal by-laws and regulations that purport to govern the location and operation of cell towers and antenna systems do not apply. However, ISED has established a clear set of regulations, which wireless carriers must follow when seeking to install or modify a tower or antenna system known as CPC-2-0-03 - *Radiocommunication and Broadcasting Antenna Systems* ( "CPC-2-0-03" )



(b) Consider using existing infrastructure

Under ISED CPC-2-0-03, before proposing a new tower or antenna installation, a wireless carrier must first look at locating its antennas on existing towers or other structures that are located within the specific geographical area and have sufficient height and structural integrity to allow the additional equipment.

In the case of the Proposed Installation, Rogers looked at a variety of nearby towers and structures before they determined conclusively that none of them were suitable or feasible for their needs. Therefore, Rogers is pursuing the Proposed Installation at this location.

The closest tower is a Fido/Rogers/TELUS location, located approximately 1.92km north east of the proposed Rogers tower. This existing tower is not a viable candidate for co-location as it is too far out of the search area set by Rogers' network planners and radio-frequency engineers and Rogers already occupies space on the existing tower.





(c) *Consult with the municipality*

ISED CPC 2-0-03 also requires Rogers to contact the applicable municipality in order to understand its local consultation requirements and any preferences it may have for tower-siting and/or design. Rocky View County's concerns, preferences and suggestions are important elements to be considered when planning a new tower or antenna system .

Pre-consultation was conducted with Rocky View County's Planning and Development department and Rocky View County has advised Rogers to follow their Telecommunications Development Permit Application Package Policy and Procedures #308. Pre-consultation was conducted to discuss the location of the Proposed Installation and to understand Rocky View County's preliminary concerns prior to submitting our formal application for approval. Rogers will adhere to any required setbacks with both Alberta Infrastructure, Transportation and County road network standards.

## **6. Other Regulatory Requirements**

(a) *Safety Code 6*

ISED manages the radio communications spectrum in Canada. Among other requirements, ISED requires cellular telecommunications facilities to comply with guidelines established by Health Canada in order to protect people who live or work near these facilities. Health Canada safety guidelines are outlined in their *Safety Code 6* document and are among the most stringent in the world.

Rogers attests that the radio antenna system for the Proposed Installation will be installed and operated on an ongoing basis so as to comply with Health Canada's *Safety Code 6* limits as it may be amended from time to time, for the protection of the general public, including any combined effects of additional carrier co-locations and nearby installations within the local radio environment.

(b) *Environmental Assessment*

- 1) The Proposed Installation will be reviewed by Rocky View County. Rocky View County will advise Rogers if an Environmental Assessment is required. Any Environmental assessments will abide by the Canadian Environmental Assessment act, 2012.
- 2) Rogers attests that the Proposed Installation will be installed and operated in a manner that respects the local environment and complies with other environmental legislation.

(c) *Aeronautical obstruction marking requirements*

Rogers attests that the Proposed Installation will be installed and operated on an ongoing basis in compliance with Transport Canada and NAV Canada aeronautical safety requirements.

We have received Transport Canada approval that outlines the lighting requirements for the proposed tower, as per Standard 621; included will be red and medium-intensity white lights.



(d) *Engineering practices*

Rogers attests that the radio antenna system for the Proposed Installation will be constructed in compliance with the *National Building Code* and the Canadian Standard Association, and will respect good engineering practices, including structural adequacy.

**7. Public Consultation Process and Invitation for Comment**

Rogers must follow either the local land-use authority's public consultation process or where one does not exist, ISED's Default Public Consultation Process (section 4.2 of CPC-2-0-03). Rogers is following Rocky View County's public consultation process per Policy and Procedure #308, which requires notification letters be sent to landowners within 1,600m of the proposed tower. Copies of the notification letters are also provided to Rocky View County and ISEDC.

**Comments and questions in response to this notification must be received in our office no later than September 18, 2019, as per Rocky View County's 21 day policy. Submissions must be clearly marked with a civic address and a mailing address or email address.**



If you have any comments or questions, or require further information about the proposed facility, please feel free to contact:

**Agent for Rogers Communications Inc.  
Evolve Surface Strategies Inc.**  
#105-58 Gateway Drive NE  
Airdrie, AB T4B 0J6  
Ph: (403) 912-2600  
Fax: (403) 912-2620  
Email: [comments@evolveinc.ca](mailto:comments@evolveinc.ca)

**Rocky View County  
Planning and Development Services  
Andrea Bryden, Municipal Planner**  
262075 Rocky View Point  
Rocky View County, AB T4A 0X2  
Ph: (403) 520-7294  
Email: [abryden@rockyview.ca](mailto:abryden@rockyview.ca)

**Innovation, Science & Economic Development  
Canada  
Southern Alberta District Office**  
Harry Hayes Building  
#478, 220 – 4<sup>th</sup> Ave. SE  
Calgary, AB T2G 4X3  
Ph : 1-800-267-9401  
Fax: (403) 292-4295  
Email: [ic.spectrumcalgary-calgaryspectre.ic@canada.ca](mailto:ic.spectrumcalgary-calgaryspectre.ic@canada.ca)

Collected feedback shall form part of the public consultation process and will be collected in compliance with the *Personal Information Protection and Electronic Documents Act*. This information will be used to assist Rogers Communications Inc. in responding to comments or questions about this proposal. Any personal information such as name, address, telephone number, and property location included in a submission from the public becomes part of the public record for this matter.

Sincerely,

*Kelsey Mackenzie*

Kelsey Mackenzie  
**Evolve Surface Strategies Inc.**  
On behalf of **Rogers Communications Inc.**

Appendix 1: Enclosures  
Notification Radius Map  
Photo Simulation  
Sketch Plan





General information relating to antenna systems is available on ISED's Spectrum Management and Telecommunications website (<http://www.ic.gc.ca/towers>). For further information regarding health and safety and industry regulations please refer to the following links:

**Antenna Systems and You**

<http://ic.gc.ca/towers>

**Frequently Asked Questions (FAQ) on Radiofrequency (RF) Energy and Health**

<http://www.ic.gc.ca/eic/site/smt-gst.nsf/eng/sf08792.html>

**Safety Code 6: Health Canada's Radiofrequency Exposure Guidelines**

[http://www.hc-sc.gc.ca/ewh-semt/pubs/radiation/radio\\_guide-lignes\\_direct-eng.php](http://www.hc-sc.gc.ca/ewh-semt/pubs/radiation/radio_guide-lignes_direct-eng.php)

**Safety of Cell Phones and Cell Phone Towers**

<http://healthycanadians.gc.ca/consumer-consommation/home-maison/cell-eng.php>

**Canadian Wireless Telecommunications Association**

<http://www.cwta.ca/>

**Spectrum Management Telecommunications**

[www.ic.gc.ca/epic/site/smt-gst.nsf/en/home](http://www.ic.gc.ca/epic/site/smt-gst.nsf/en/home)

**CPC-2-0-03 — Radiocommunication and Broadcasting Antenna Systems**

<http://www.ic.gc.ca/eic/site/smt-gst.nsf/eng/sf08777.html>

**Radiocommunication Act**

<http://laws.justice.gc.ca/eng/acts/r-2/fulltext.html>

**Health Canada – For the Record & Statements**

<http://www.hc-sc.gc.ca/ahc-asc/media/ftr-ati/2014/2014-023fs-eng.php>

**Canadian Environmental Assessment Act 2012**

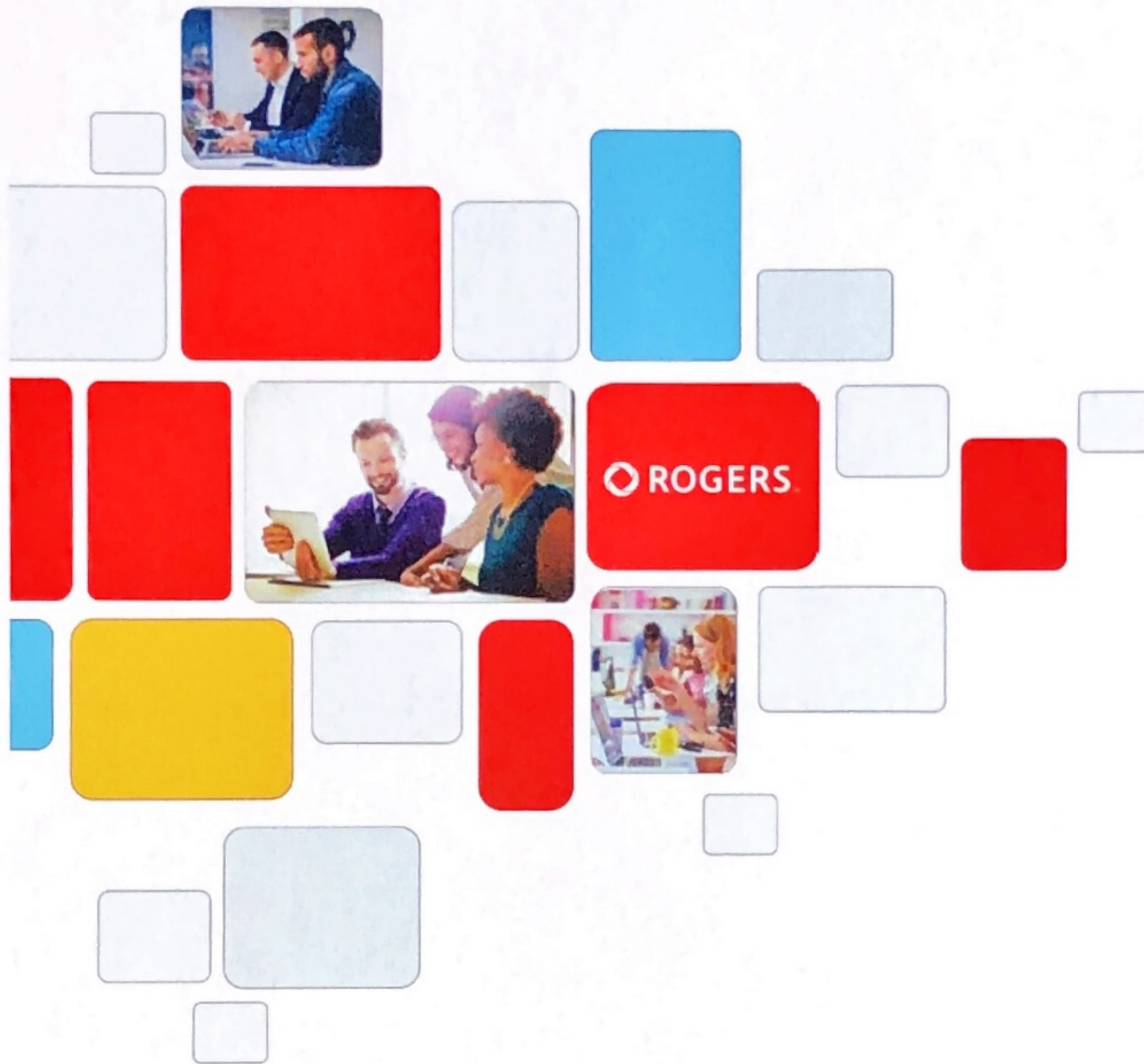
<http://laws-lois.justice.gc.ca/eng/acts/C-15.21/>

**Rogers Communications Inc.**

<http://www.rogers.com>





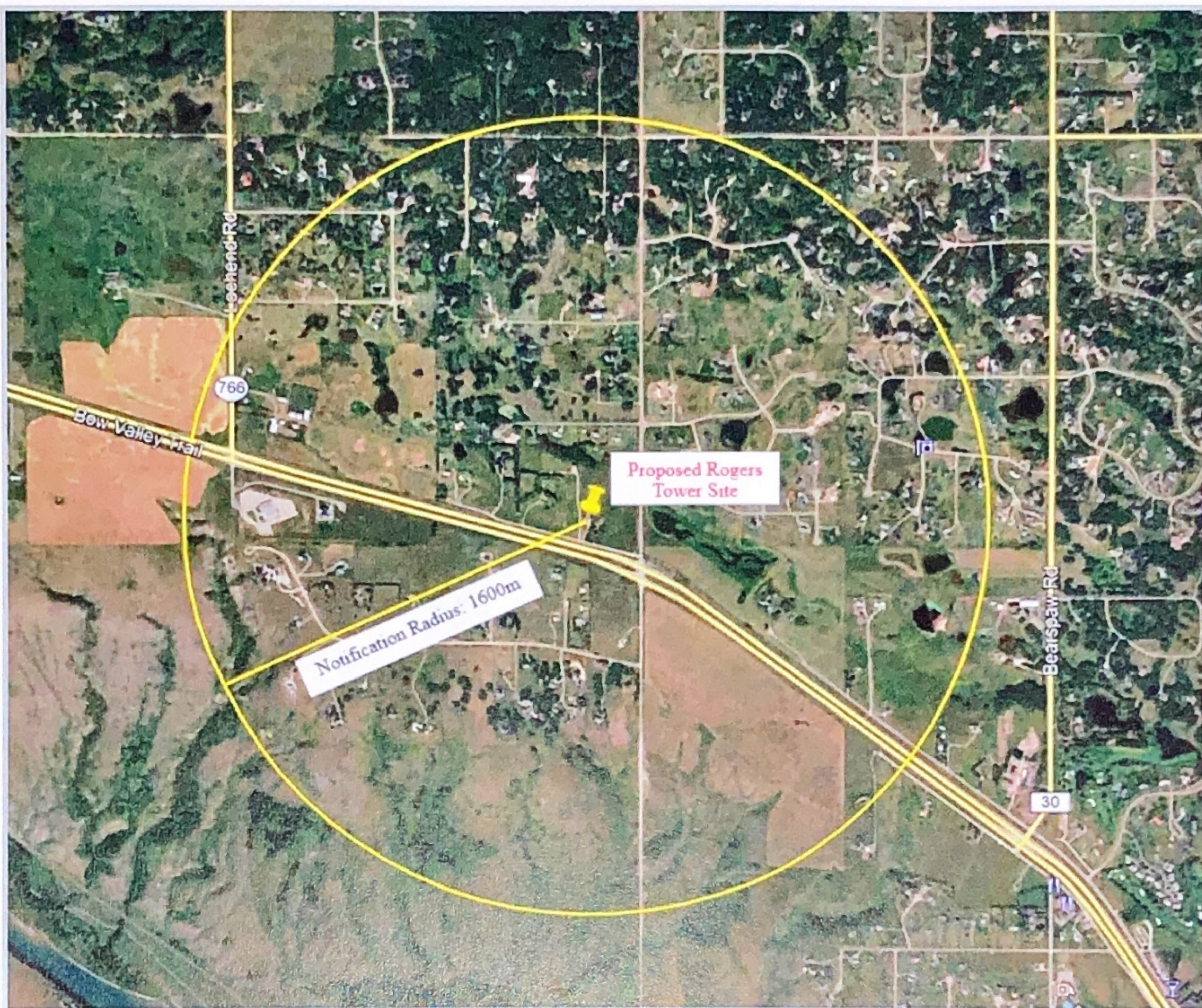


Public Notification Package for  
Proposed Wireless Communications Installation  
Plan 2266JK, Block 1, Ptn. SE 35-25-3 W5M  
Rocky View County, Alberta  
Rogers Site Name: W5816 Township Road 255  
APPENDIX 1





NOTIFICATION RADIUS MAP







Existing Northeast Elevation







Proposed Northeast Elevation

This is an artists rendering believed to be an accurate representation







Reference Map





# Rogers Communications Inc.

## Site Sketch

2266JK;I SE 35-25-3 W4M  
In Rocky View County



NOTE:  
THIS IS NOT A FORMAL SURVEY PLAN  
SKETCH REPRESENTATION ONLY

Source: Esri, DigitalGlobe, GeoEye, IGN, AerGRID, USDA, USGS, AeroGRID, IGN, and the GIS User Community

Legend: — Lease Boundary  
— Utility Line

**evolve**  
SURFACE STRATEGIES INC.

| Description | Latitude  | Longitude   | Lease Area               | 225.00m <sup>2</sup> | 2421.87 Sq. Ft.  |
|-------------|-----------|-------------|--------------------------|----------------------|------------------|
| Site Center | 51.169528 | -114.307129 | Access Area              | 711.72m <sup>2</sup> | 7660.85 Sq. Ft.  |
| Approach    | 51.168884 | -114.307269 | Total Area               | 936.72m <sup>2</sup> | 10082.72 Sq. Ft. |
| NE Corner   | 51.169595 | -114.307021 | File #: 25227            |                      |                  |
| SE Corner   | 51.169460 | -114.307021 | Revision #: 2            |                      |                  |
| SW Corner   | 51.169460 | -114.307235 | Sketch Date: 13-Aug-2019 |                      |                  |
| NW Corner   | 51.169594 | -114.307236 |                          |                      |                  |